



TK International  
020 7794 8700  
www.t-k.co.uk

Residential Sales  
Residential Lettings  
Property Management

Sales Office:  
9 Heath Street  
Hampstead  
London NW3 6TP  
E: sales@t-k.co.uk

Lettings Office:  
16-18 Heath Street  
Hampstead  
London NW3 6TE  
E: lettings@t-k.co.uk

tk.international  
TK International  
TK International

Est.  
1998



## Goldhurst Terrace South Hampstead NW6

Situated on the first floor of an attractive red brick mansion block in South Hampstead is this superb 943 sq ft two double bedroom apartment with use of a communal lift and a mature communal garden.

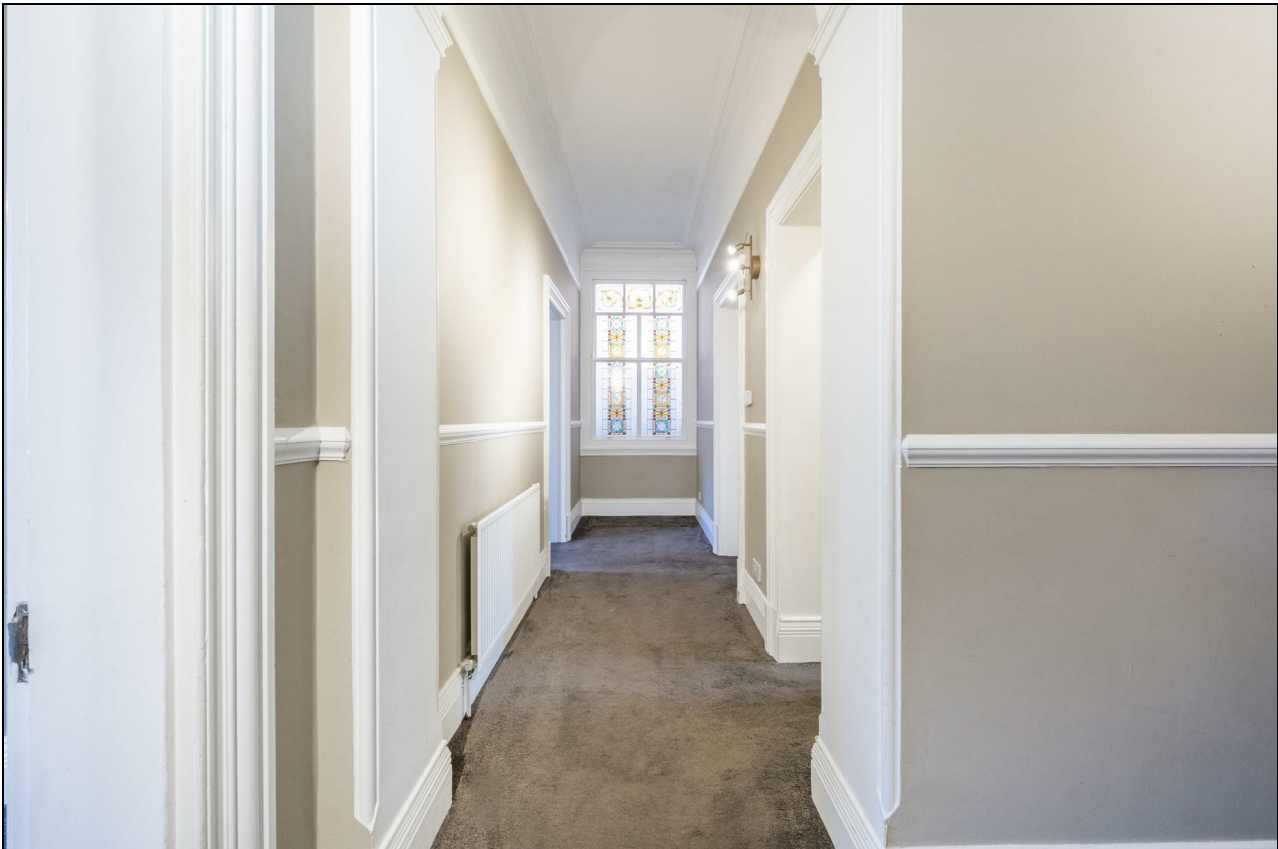
The flat comprises charming living and entertaining space and features high ceilings and wonderful period features throughout. The accommodation includes a spacious reception room, a well equipped separate kitchen/breakfast room, two generously proportioned double bedrooms and a modern bathroom, providing ample space for a small family or professionals seeking a comfortable living environment.

The mansion block is perfectly located for transport links of both Finchley Road and Swiss Cottage (Jubilee & Metropolitan Lines), providing easy access to Central London. South Hampstead is known for its vibrant community and excellent transport links, making it an ideal location for those who wish to enjoy the best of London living. The surrounding area boasts a variety of local amenities, including shops, cafes, and parks, all within easy reach.

Please note that CGI furniture has been included in some of the imagery.

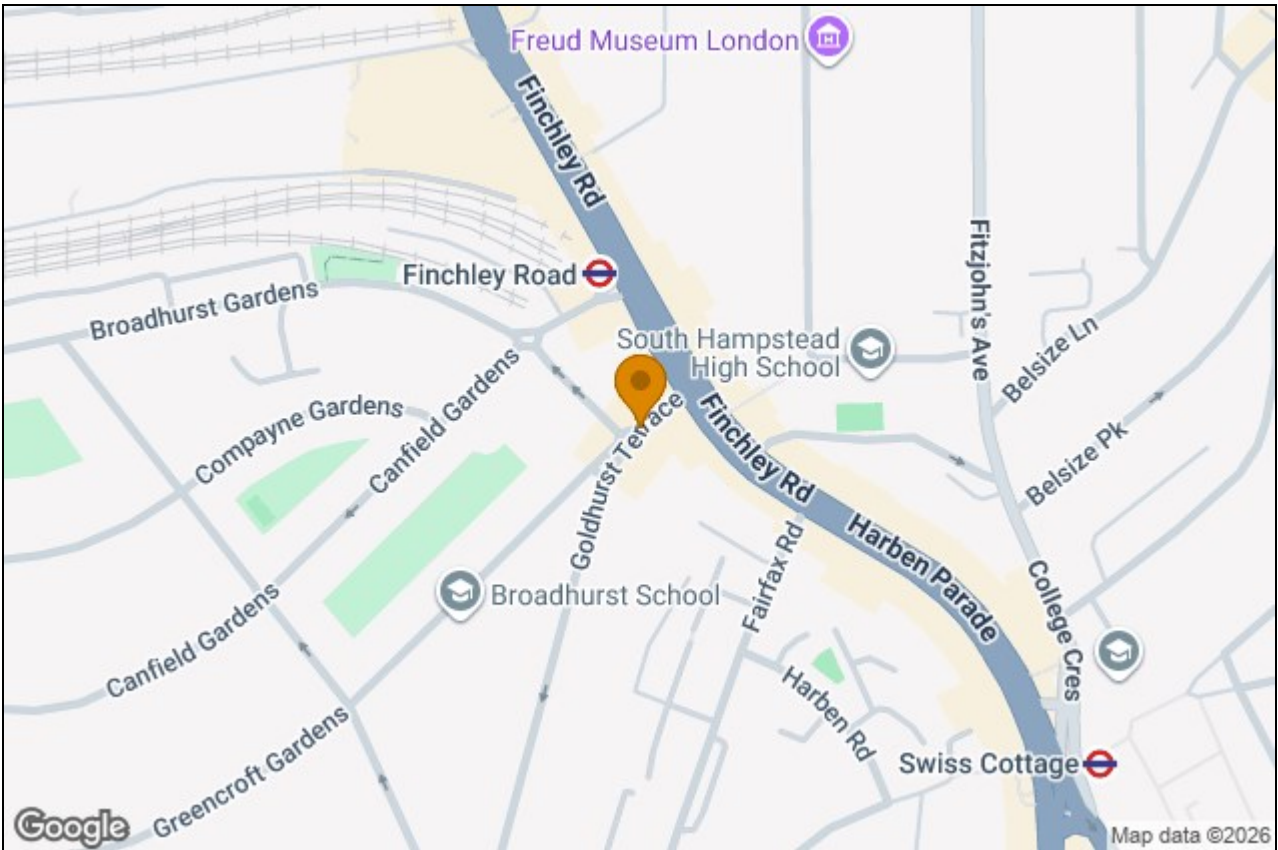
**£600,000**

**Share of Freehold**



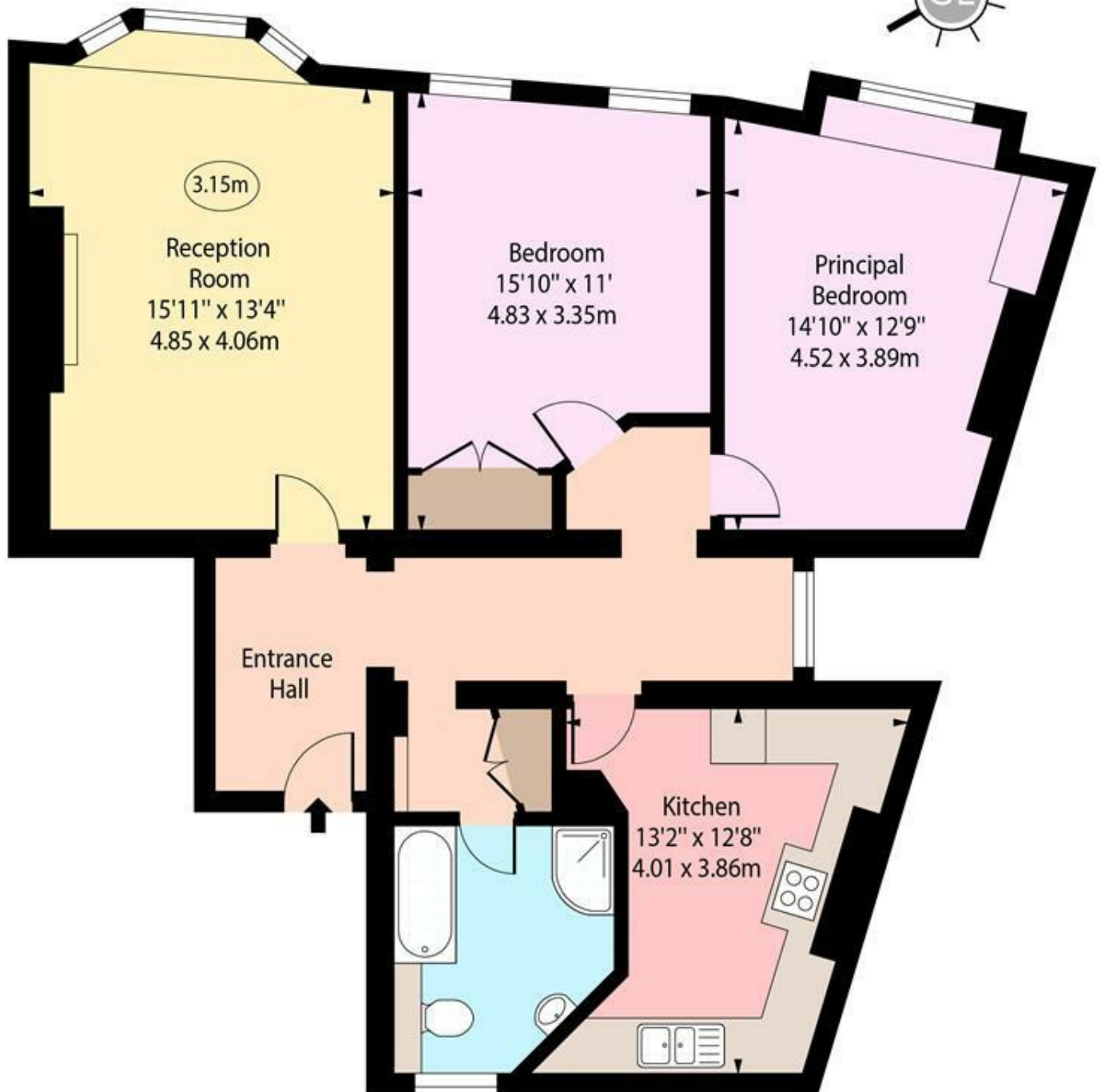






# Goldhurst Mansions, Goldhurst Terrace, NW6

○ - Ceiling Height



First Floor

Approx Gross Internal Area      943 Sq Ft - 87.60 Sq M

For Illustration Purposes Only - Not To Scale

[www.goldlens.co.uk](http://www.goldlens.co.uk)

Prepared for TK International

Ref. No. 026091E